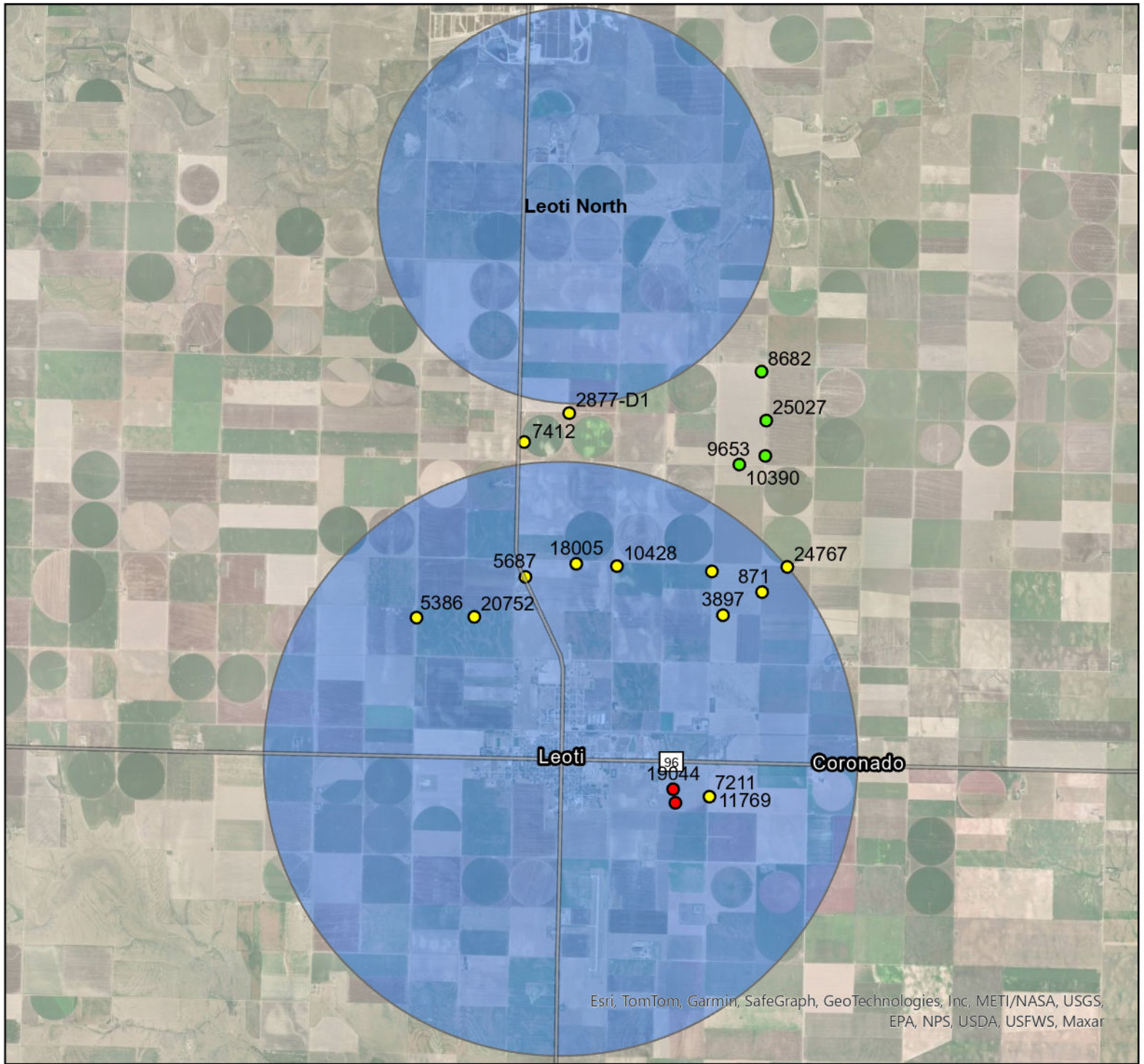
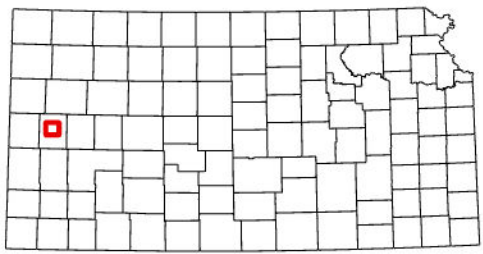


GMD No. 1 WTAP Dismissals Leoti



Esri, TomTom, Garmin, SafeGraph, GeoTechnologies, Inc, METI/NASA, USGS, EPA, NPS, USDA, USFWS, Maxar



- WTAP Dismissal
- FY2022
 - FY2023
 - FY2024
 - FY2025
 - High Priority Area



Kansas Department of Agriculture
Division of Water Resources
September 24, 2025