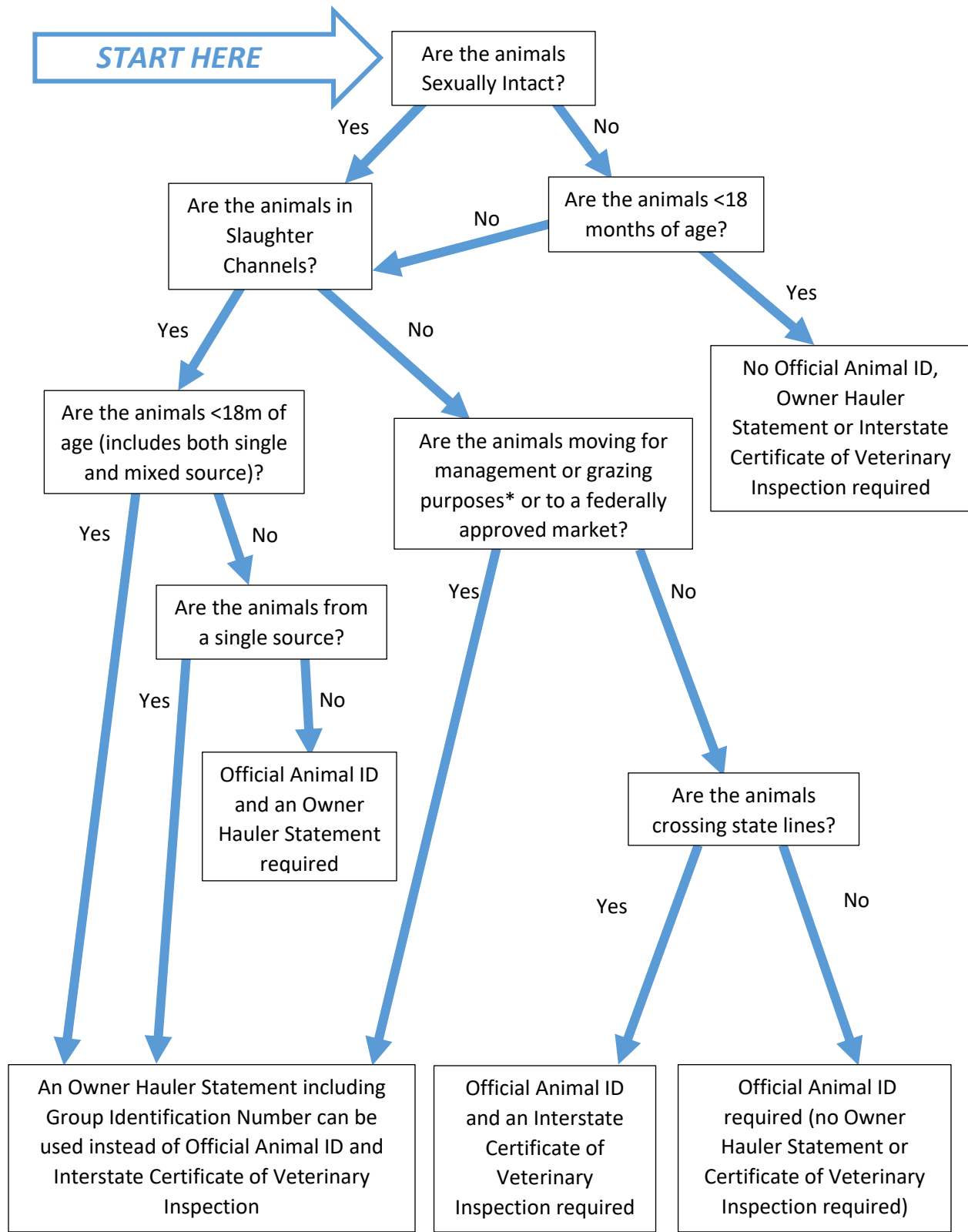


Federal Sheep and Goat Official Identification Decision Tree for Animals in Interstate Commerce*



*These rules begin applying when the animal first enters interstate commerce which includes but is not limited to animals unloaded at markets, sales, exhibitions or other sites where interstate commerce occurs; moved across a state line; sold to an out-of-state buyer; or animals acquired by people who engage in interstate commerce.

**Only applies when both premises are owned or leased by the same person and there is no commingling with other unidentified animals from another herd.