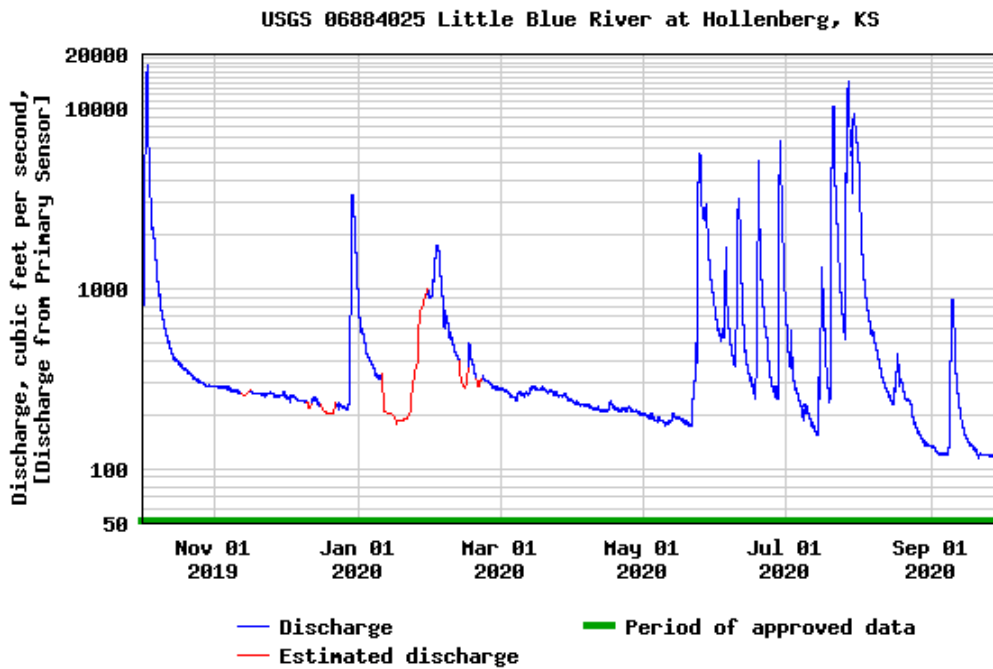


Hollenberg totals

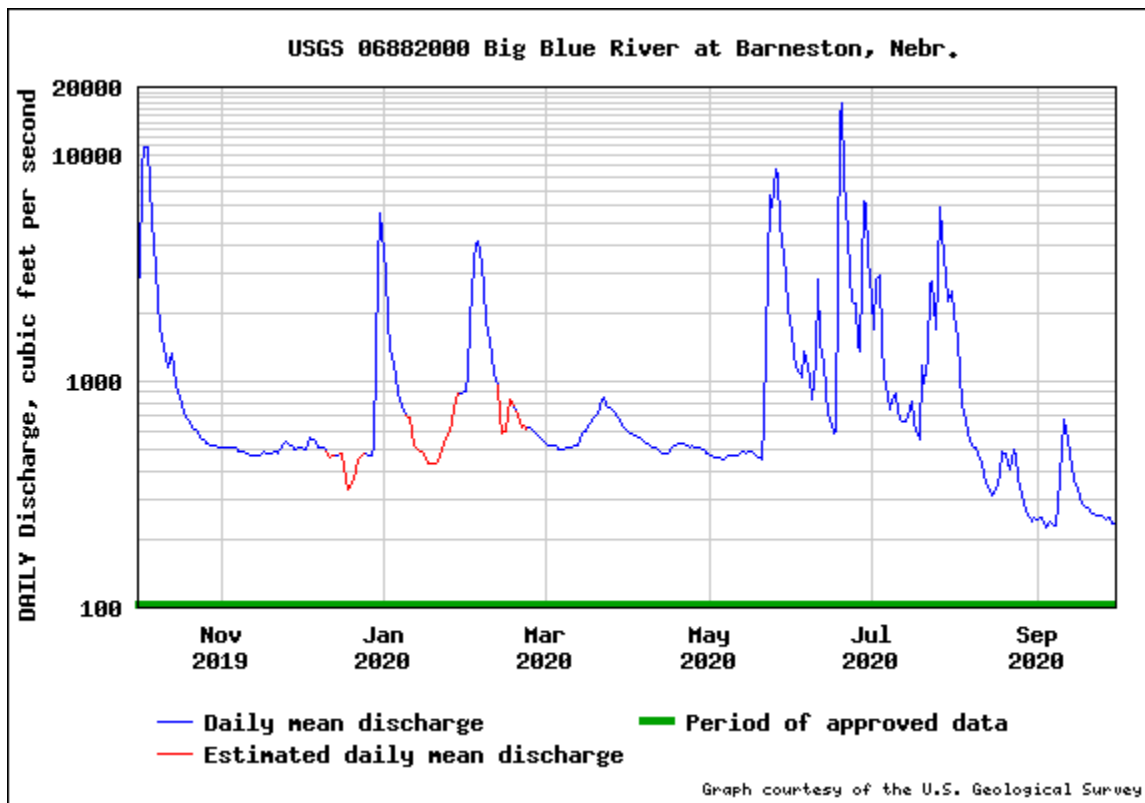
Day	Oct	Nov	Dec	Jan	Feb	Mar	Apr	May	Jun	Jul	Aug	Sep
	2019	2019	2019	2020	2020	2020	2020	2020	2020	2020	2020	2020
Total	39,970	8,002	13,020	12,600	15,960	8,229	6,548	23,220	28,499	64,620	18,180	5,293
Mean	1,288	267	420	407	550	265	218	749	950	2,085	587	176
Max	11800	285	2770	967	1660	286	239	4850	4320	11000	5200	770
Min	287	252	205	181	279	241	204	177	265	158	136	112
Ac-ft	79,280	15,870	25,829	25,000	31,660	16,320	12,989	46,050	56,520	128,200	36,070	10,500



The Little Blue Basin in Nebraska is approximately 2,752 square miles and contains 245 irrigation permits and 139 storage rights. In the 2020 water year, the basin was significantly drier in the upper reaches than it was in the lower end of the basin upstream of the state line. Precipitation in the upper reaches totaled less than 25 inches in areas which is around 80-90% of normal. Parts of the lower half of the basin saw precipitation totals in excess of 40 inches, which is over 125% of normal. Overall, flows ran higher than average at the state line with the daily mean about 172 cfs greater in the 2020 water year than the running average. The daily mean for the 2020 water year was about 667 cfs and the daily average since 1974 is about 495 cfs. From the end of May to the beginning of August the basin saw multiple rain events move through the area which kept stateline flows well above the minimum target for the entirety of irrigation season. With the exception of one or two minor rain events, August and September were mostly dry and the daily flows at the state line continued trending down for the remainder of the water year. The lowest daily mean flow of the 2020 water year was 112cfs. This happened on the last day of September which as we now know lead to a brief period of drought to kick off the 2021 water year. Because of the sufficient amount of rainfall that fell in the area we did not do any surface water administration on the Little Blue Basin in the 2020 water year.

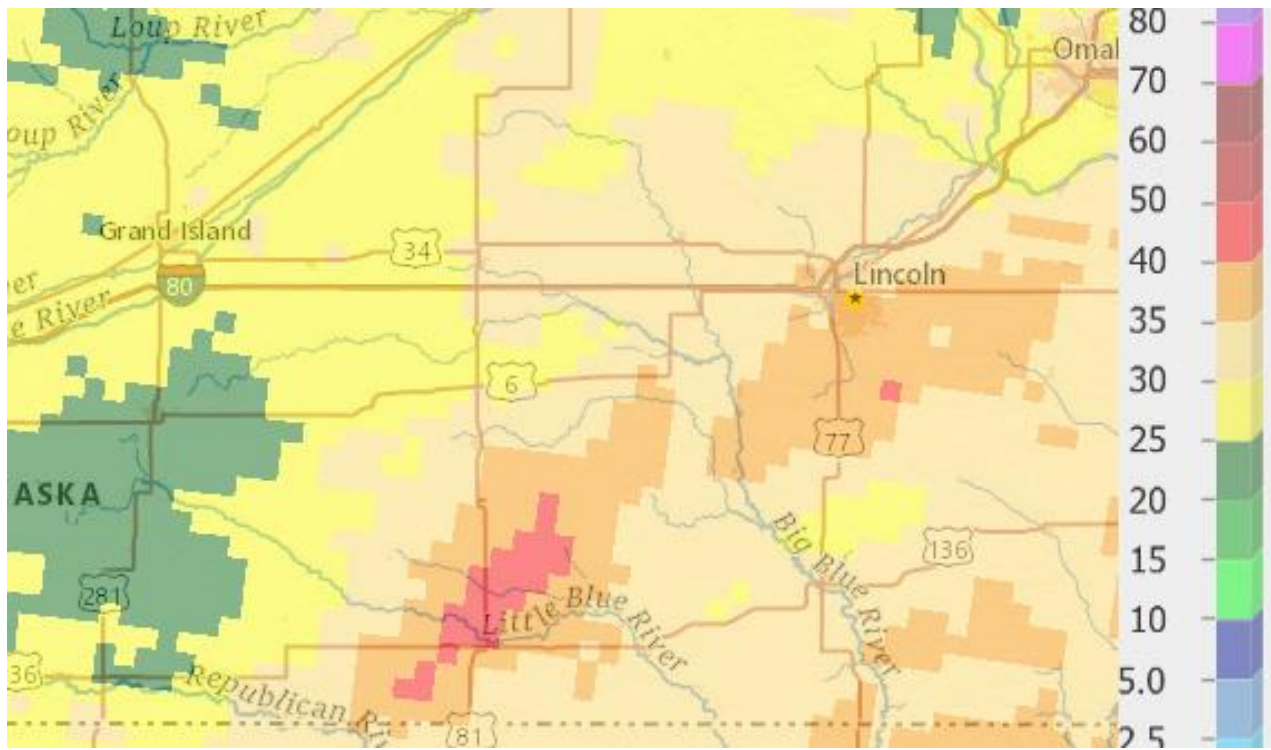
It was the same story for the Big Blue river basin in Nebraska for the 2020 water year, we did not have any surface water administration. There is an additional 814 surface water irrigation permits and 373 storage permits in this basin which encompasses about 4,447 square miles. The headwaters on the western side had the least amount of rain with around 80% of the normal amount during this water year. The remainder of the basin received 30-40 inches, or anywhere between 90% to 125% of the average rainfall. The state line flows stayed above the minimum target for the entire water year with multiple rain events moving through the basin during May, June and July. Just like the Little Blue basin, the flows trended down at the state line gaging site near Barneston the last two months of the water year with the lowest flow recorded in September 2020 which was 227cfs. The daily mean for the Big Blue River at Barneston was 1,189 cfs which is higher than the running average of about 862cfs.

It was challenging to get to all areas of the basin to check pump sites in 2020 year due to the consistent rainfall but that's not a problem that you will often find me complaining about. I'll welcome rain in all forms and and hopefully this year we can concentrate on the pump sites we didn't get the chance to check in 2020



Day	Oct	Nov	Dec	Jan	Feb	Mar	Apr	May	Jun	Jul	Aug	Sep
	2019	2019	2019	2020	2020	2020	2020	2020	2020	2020	2020	2020
Mean	2,258	496	856	798	1,318	618	524	1,827	3,046	1,687	525	307
Max	10900	537	5590	3020	4210	855	601	8760	17100	5840	1980	675
Min	514	471	335	431	549	497	476	451	584	552	241	227
Ac-ft	138,800	29,509	52,650	49,070	75,780	38,010	31,160	112,300	181,200	103,700	32,300	18,270

Total observed precip



Percent of total precip

