

South Hutchinson Interior Drainage Mitigation Technical Assistance

April 23, 2019



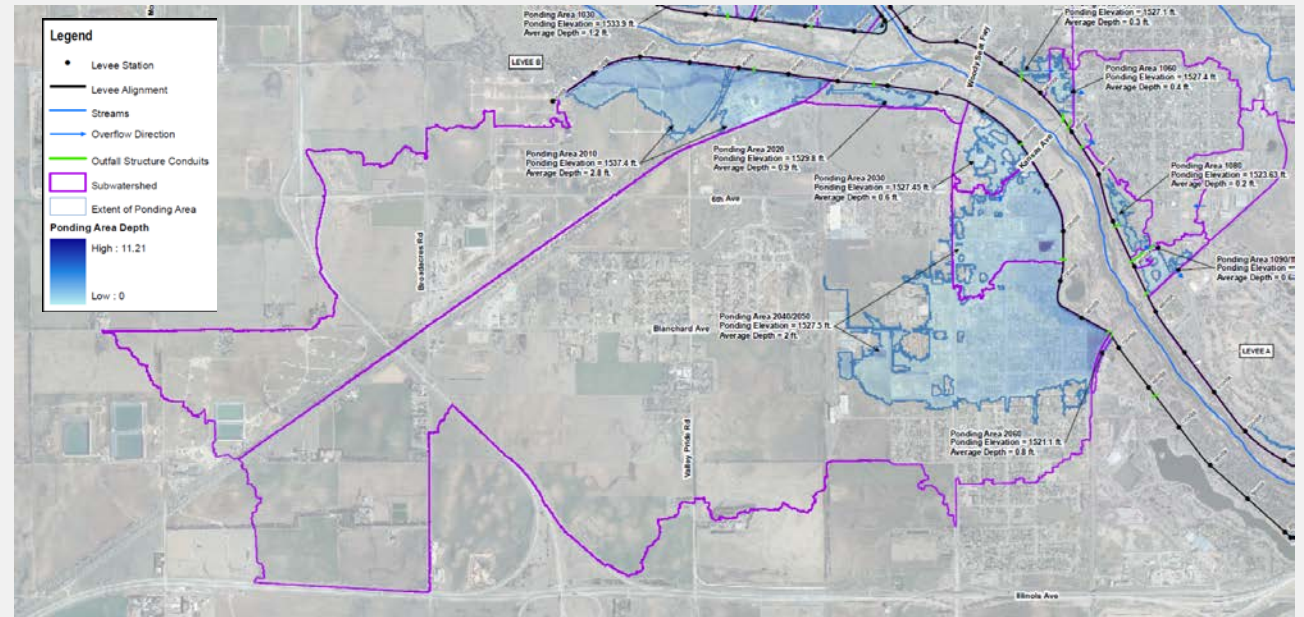
History

- Levee Certification Project for Hutchinson & South Hutchinson levee system.
 - Included new Interior Drainage mapping for South Hutchinson using HEC-HMS methods.
- Interior Drainage Analysis was updated and funded by Hutchinson using PC-SWMM methods along with some additional improvements in watershed detail.



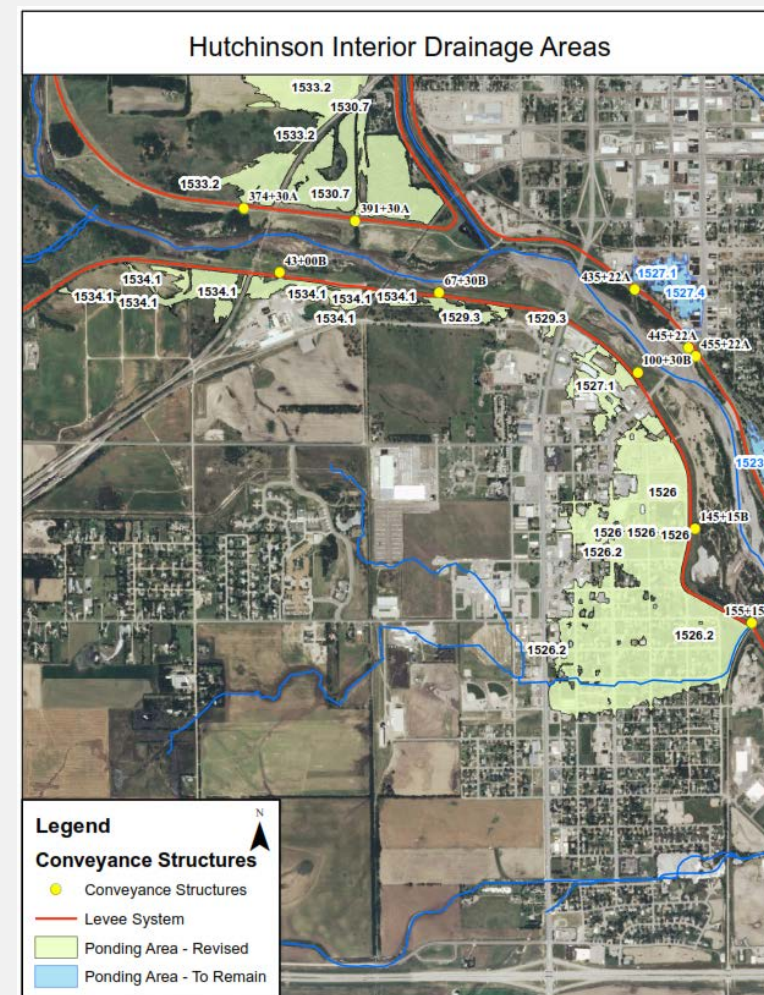
Technical Assistance through RiskMAP Program

- Technical Assistance projects have been completed as another “type” of project funded through RiskMAP.
- This project was selected for funding in FY2018 due to identified needs from the Levee Certification Project, the Hutchinson Interior Drainage Project, and the Reno County PMR Project.



Purpose of Project

- Address flooding issues associated with Interior Ponding at Levee Station 155+15B.
 - Reduce current flood risk
 - Allow for more future development
 - Increase Resilience



Why are we here today?

To get **YOUR** Input!

- Identify feasible alternatives to consider.
 - Types of alternatives
 - Locations of alternatives
- Discuss potential modeling assumptions.



The Next Steps

- Alternatives will be modeled and evaluated
- Summary of findings will be provided to community
 - Will include options that range in cost and magnitude.
 - General design information included
 - Budget level costs included
- Community should then take steps to select alternative and move forward. (Not part of this Technical Assistance Project)



Time to Brainstorm!

