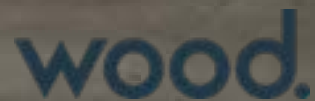


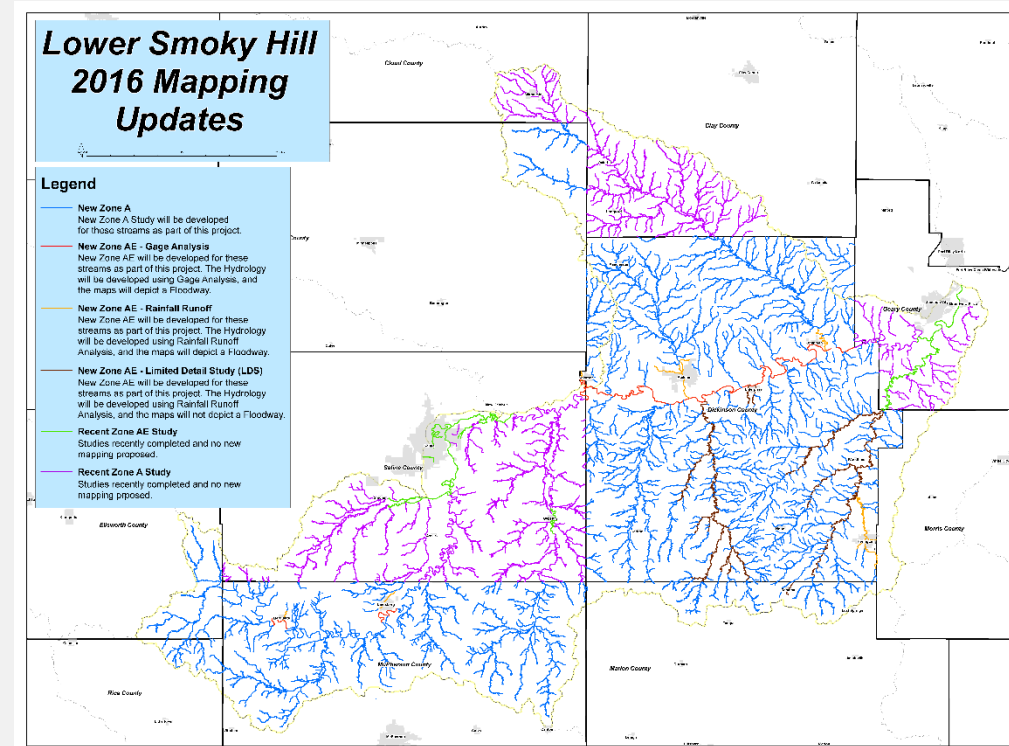
Solomon River Tributary Watershed Stormwater Technical Assistance

April 23, 2019



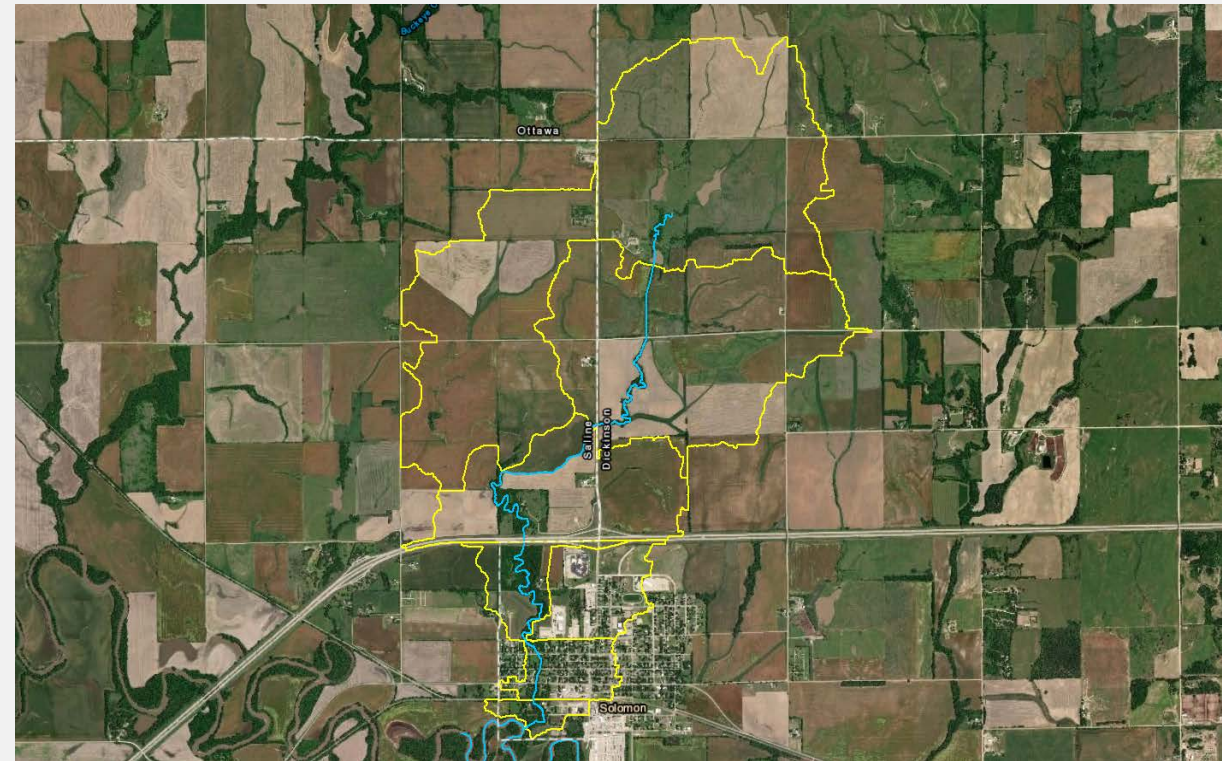
History

- FY2016 FEMA-funded Floodplain Mapping Project for the Lower Smoky Hill Watershed (Under RiskMAP Program).
 - Included new Zone AE mapping for Solomon, KS
 - Solomon River Tributary
 - Extra detailed analyses was performed using rainfall-runoff HEC-HMS methods for hydrology coupled with 1D/2D HEC-RAS methods for hydraulics.
 - Analyses were verified using historical flood inundation information provided by the community.



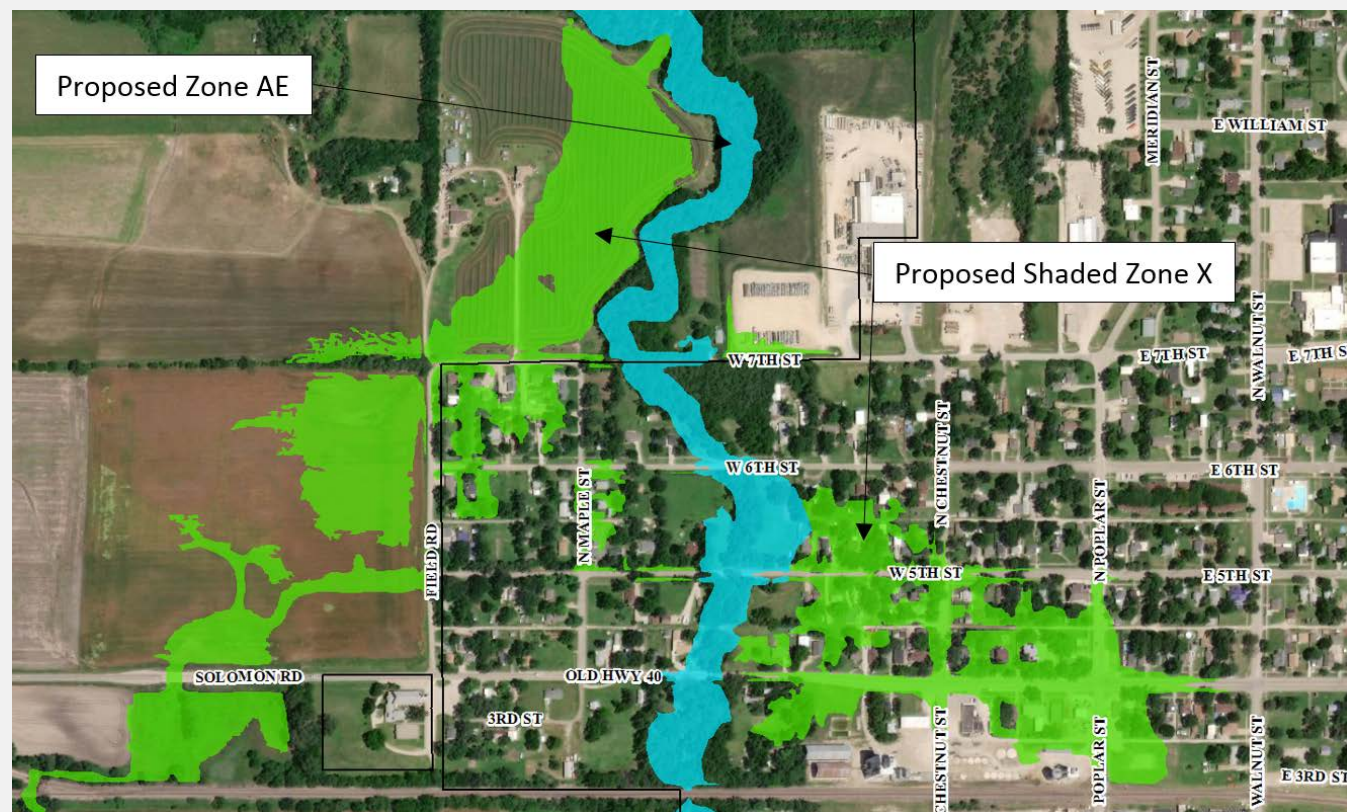
Technical Assistance through RiskMAP Program

- Technical Assistance projects have been completed as another “type” of project funded through RiskMAP.
- This project was selected for funding in FY2018 due to identified needs from the Lower Smoky Hill Watershed project.



Purpose of Project

- Address flooding issues from Solomon River Tributary
 - Reduce current flood risk
 - Allow for more future development
 - Increase Resilience



Why are we here today?

To get **YOUR** Input!

- Identify feasible alternatives to consider.
 - Types of alternatives
 - Locations of alternatives
- Discuss potential modeling assumptions.



The Next Steps

- Alternatives will be modeled and evaluated
- Summary of findings will be provided to community
 - Will include options that range in cost and magnitude.
 - General design information included
 - Budget level costs included
- Community should then take steps to select alternative and move forward. (Not part of this Technical Assistance Project)



Time to Brainstorm!

