

# Pittsburg Technical Assistance Project

## Kickoff Meeting

*August 25, 2021*



**FEMA**



**wood.**

*Thank you for  
joining us today!*

**Your input is very  
important to this  
work.**



**THANK  
YOU**

# Introductions

## Kansas Department of Agriculture

Tara Lanzrath, *CFM*  
*Floodplain Mapping Coordinator*

Joanna Rohlf, *CFM*  
*Floodplain Mapping Specialist*

William Pace, *CFM*  
*Floodplain Mapping Specialist*

Steve Samuelson, *CFM*  
*State NFIP Coordinator*

Cheyenne Sun Eagle,  
*NFIP Specialist*



## Wood Environment & Infrastructure Solutions

Joe File, *PE, CFM*  
*Senior Associate/Program Manager*

Maria Neeland, *PE, CFM*  
*Engineer*

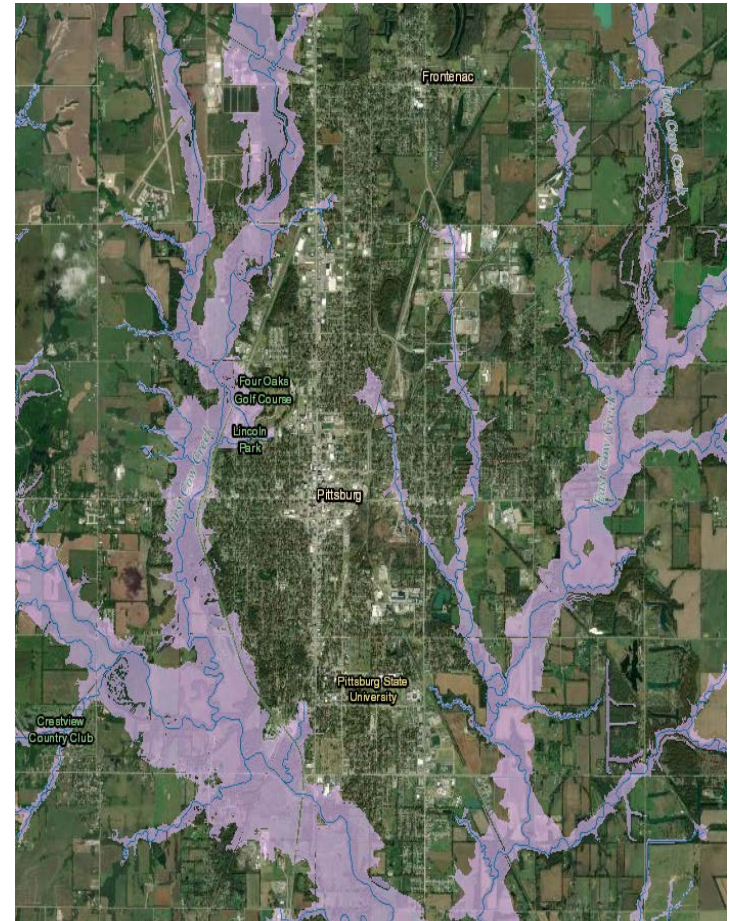
## FEMA Region VII

Andy Megrail, *Regional Project Officer* <sup>3</sup>



# Background

- Lower Neosho Custom Watershed BLE Project
  - *Kick-off Meeting and BLE Review: November 19, 2019*
  - *Discovery Meeting: April 15, 2020*
  - *City of Pittsburg Discussion: May 20, 2020*
- Crawford County Data Development Project
  - *Kick-off Meeting: July 14, 2021*
  - *Data Development Work: In Progress*



# Goals of Technical Assistance Project

1. Perform Future Conditions Modeling
  - Using a future land use plan provided by community
  - Estimate the flood risk following anticipated development
2. Perform a Flood Mitigation Study
  - Develop conceptual flood mitigation alternatives to reduce flood risk
    - Existing conditions and future conditions
    - Targeted to areas of concern
    - Mitigation may include stormwater detention, channel improvements, structure enlargements at crossings, relocation of future development etc.

# Requested Information from City

1. Future Land Use Plan
2. GIS data of City's Storm System
3. Measurements of major storm lines, if not included in GIS dataset
4. Location of key areas of flood concern (up to 3)



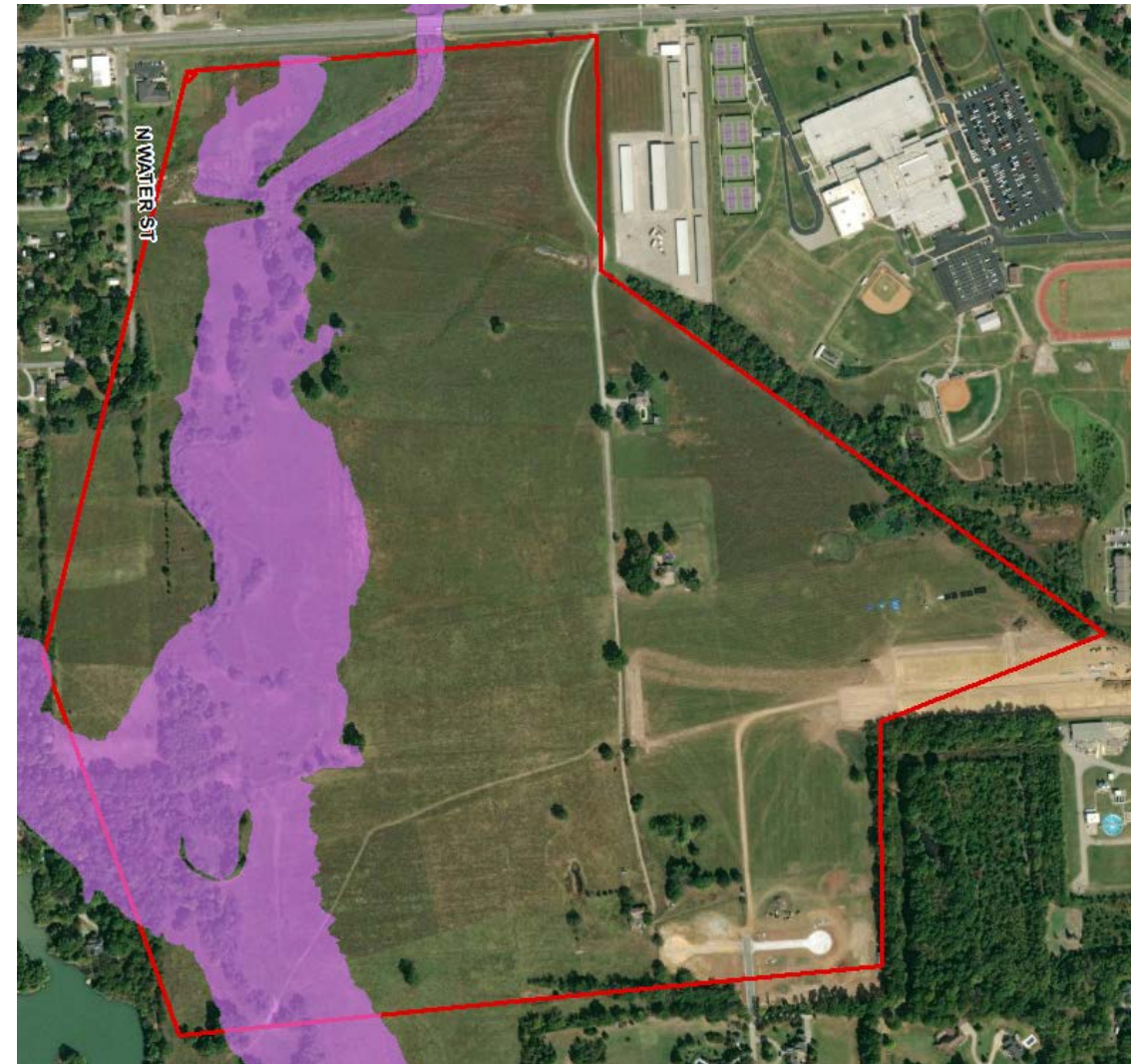
# Comments Previously Provided

- Potential expansion project for the Regional Wastewater Treatment Plant, including reconfiguration of lagoons.



# Comments Previously Provided

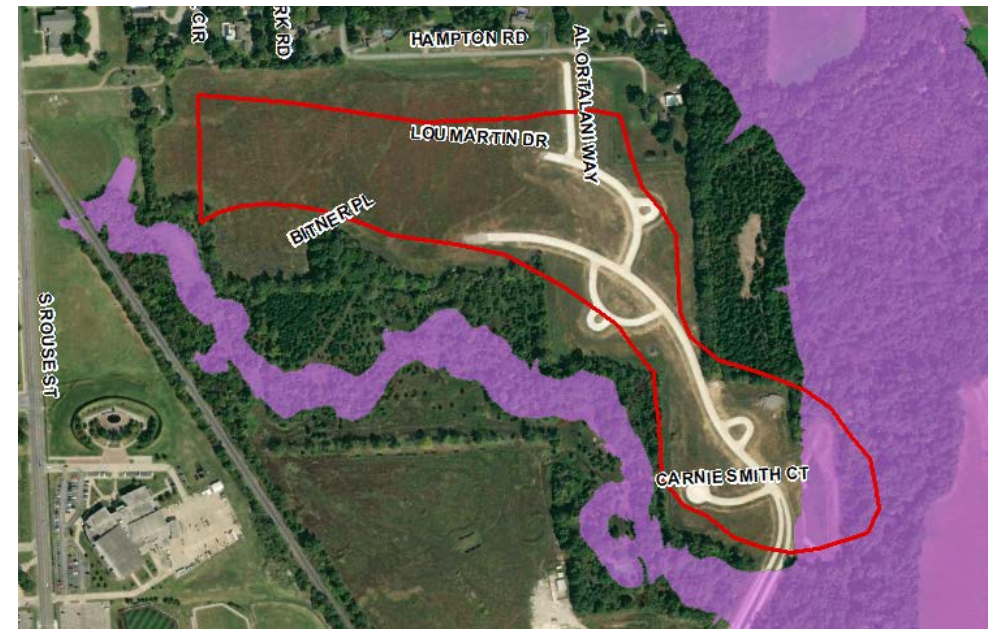
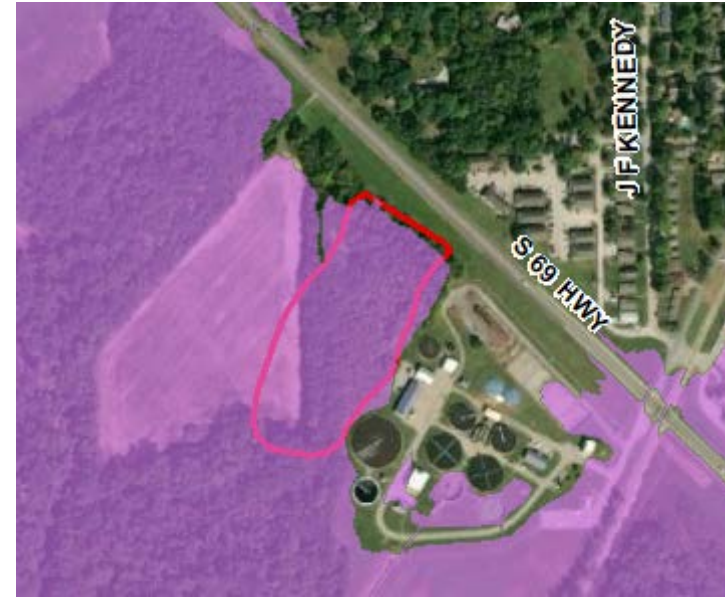
- Plans for residential and multi family development in this area, south of E 4<sup>th</sup> Street.





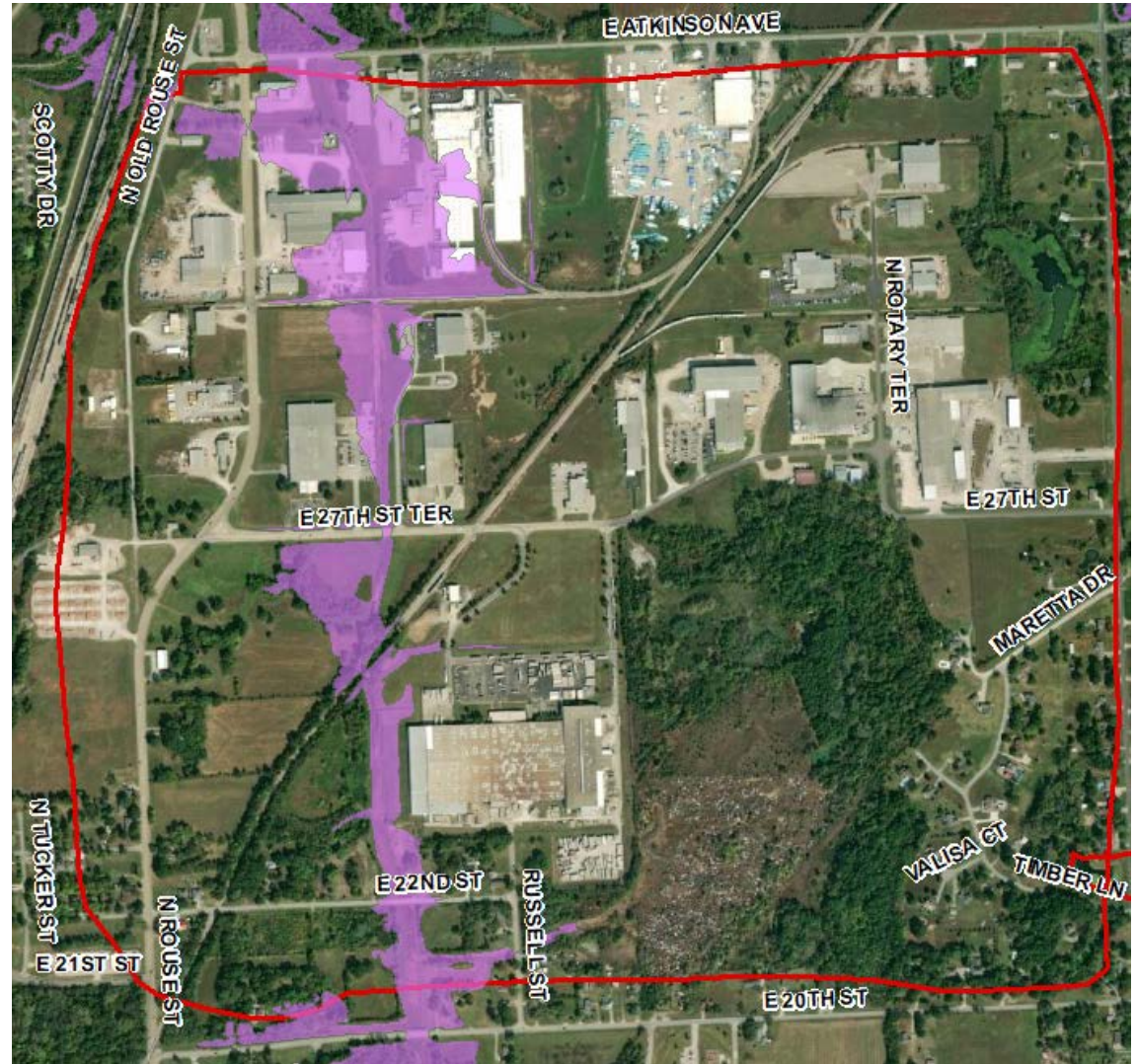
# Comments Previously Provided

- Potential expansion project at Wastewater Treatment Plant along S Highway 69
- New residential development with stormwater controls is expected east of S Rouse St.



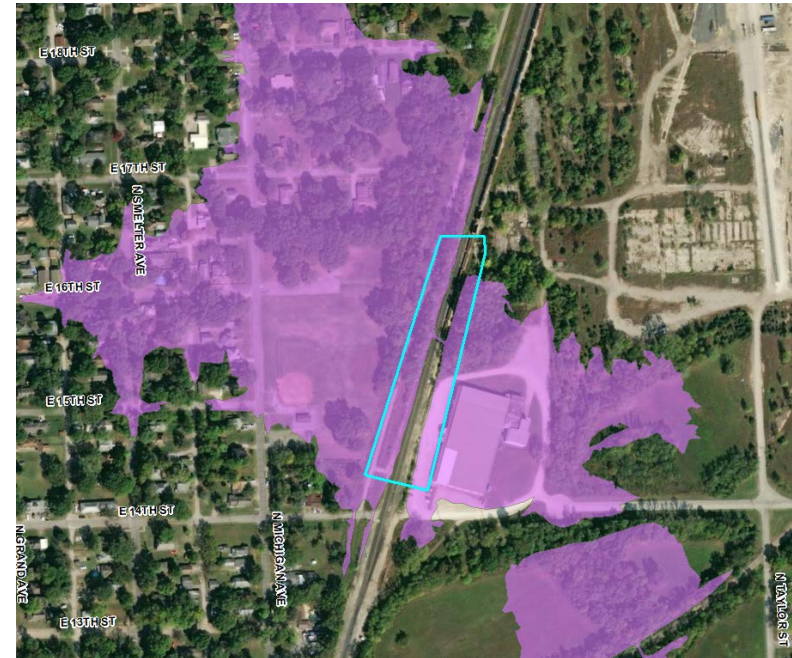
# Comments Previously Provided

- Preliminary Drainage Study and future needs analysis done by Olsson and Associates





- On-going problem with old mining pit overflowing N Free Kings Hwy.
- Existing drainage pipes through railroad limit the release of water downstream





# Comments Previously Provided

- Strong interest in improving the drainage from the east side of the bypass to the west.



# Comments Previously Provided

- Bridge replacement project along E 14<sup>th</sup> Street expected for 2020.
- KDOT Bridge improvement project along W 4<sup>th</sup> Street under construction in 2020.



# Scope of Work and Deliverables

- Future Conditions Modeling
  - Flood Inundation maps that depict the impacts to the 1% annual chance flood risk area due to future conditions land use
- Flood Mitigation Identification and Analysis
  - Evaluation and documentation of mitigation alternatives
  - Flood inundation maps that depicts the impacts to the 1% annual chance flood risk due to mitigation alternatives



# Scope of Work and Deliverables

- Cost Estimate of Proposed Improvements
  - Planning level cost estimates for proposed flood mitigation alternatives
- Flood Mitigation Report
  - Will include documentation of the modeling methods, modeling results, proposed mitigation alternatives, and cost estimates

# Anticipated Schedule

- Draft Report and Follow-up Meeting- December 2021
- Final Report and Deliverables- By January 15, 2022

## KDA Contact Information

Tara Lanzrath, CFM

[Tara.Lanzrath@ks.gov](mailto:Tara.Lanzrath@ks.gov)

D: 785-296-2513 M: 785-276-9359  
Floodplain Mapping Coordinator

Joanna Rohlf, CFM

[Joanna.Rohlf@ks.gov](mailto:Joanna.Rohlf@ks.gov)

D: 785-296-7769  
Floodplain Mapping Specialist

William Pace, CFM

[William.Pace@ks.gov](mailto:William.Pace@ks.gov)

D: 785-296-5440  
Floodplain Mapping Specialist

## Wood Contact Information

Joe File, PE, CFM

[joe.file@woodplc.com](mailto:joe.file@woodplc.com)

O: 785-272-6830 M: 785-554-9108  
Senior Associate / Program Manager

Maria Neeland, PE, CFM

[maria.neeland@woodplc.com](mailto:maria.neeland@woodplc.com)

D: 785-414-3127 M: 785-410-7499  
Project Manager



# Discussion and Questions?

[https://gis2.kda.ks.gov/gis/lower\\_neosho/](https://gis2.kda.ks.gov/gis/lower_neosho/)