

Osawatomie, KS Flood Hazard Mapping Project Introduction

**Kansas Department of Agriculture –
Division of Water Resources**

**Osawatomie, KS LAMP Produce
Preliminary Map Products**

August 8, 2022

Agenda

1 Background

2 Project Overview

3 Path Forward

Background

Modernization of FIRMs

- 2003 - Flood Insurance Rate Maps (FIRM) for Miami County began to get modernized
- June 18, 2007 - Osawatomie, KS levee system was Provisionally Accredited (PAL)
- August 19, 2008 – new FIRM becomes Effective
- June 18, 2009 - The PAL expired prompting the need for FEMA to initiate a new flood study
- March 2010 – Map revision project initiated to re-map Miami County Zone As using LiDAR and to address expired PAL
- February 2011 – FEMA temporarily suspends levee mapping projects. Miami County minus Osawatomie FIRM panels continue.
- January 16, 2014 – Revised Miami County FIRMs minus Osawatomie panels go effective

Background

LAMP

- July 2013 - Levee Analysis and Mapping Procedures (LAMP) was released.
- LAMP Plan Preparation Phase
 - December 11, 2013 – FEMA kickoffs the LAMP project
 - March 12, 2014 – Local Levee Partnership Team (LLPT)
 - May 14, 2014 - LAMP Plan completed
- LAMP Approach Analysis Phase
 - December 1, 2015 – LAMP PMR project initiated
 - April 27, 2016 – Coordination meeting with City
 - July 29, 2016 – Floodplain mapping task completed

Background

Levee Flood Risk Data Development

- February 23, 2017 – Initiated FIRM panel updates
 - Incorporated leveraged detailed study for Marais Des Cygnes River and Pottawatomie Creek
 - Performed Natural Valley analysis
 - Completed QR3
- Put on Hold pending levee accreditation
- Levee Accreditation
 - Data certification submitted to FEMA from April 2021 - June 2022
 - **FEMA accredits data July 14, 2022**

Project Overview

New Enhanced Flood Study

- Marais des Cygnes River and Pottawatomie Creek
- “With Levee” and “Natural Valley” analyses
- Survey of bridges/culverts and channel cross sections
- Topographic data using LiDAR 2-meter DEM
- Hydrologic and Hydraulic (H&H) Analyses
 - 2009 Initiated and submitted in 2010
 - 2012 Revised Marais des Cygnes River model based on community’s consultant comments
 - 2016 Floodplain mapping and work maps completed
 - 2017 Evaluating Pottawatomie Creek’s hydraulic modeling of railroad structure per community’s comment

Project Overview

New Enhanced Flood Study

- H&H (cont.)
 - Marais des Cygnes River peak discharge from stream gage analysis
 - Pottawatomie Creek peak discharge from Regression Equation plus stream gage weighting
 - Steady State HEC-RAS 1-D
 - Floodway

Project Overview

New Enhanced Flood Study

- Floodplain Mapping
 - Riverward side of levee mapping the 1% and 0.2% floodplain boundaries and floodway
 - Landward of levee mapping
 - 1% interior drainage (Zone AE)
 - levee impacted area (1% natural valley) as “Area of Reduced Flood Hazard” [Zone X (hatching)]
 - 0.2% floodplain boundaries (Zone X)

Project Overview

New Enhanced Flood Study

- Produce Preliminary Map Products
 - FIRM Database
 - Preliminary FIRM Panels
 - Flood Insurance Study updated
 - Summary of Map Actions (SOMA)

Quality Review

- Quality Review #3 (QR3) to take place now for the next 30-days
- Community review at same time
- All comments will be addressed and concurred with FEMA's QR3 reviewer, KDA, and City of Osawatomie before Preliminary Distribution

Project Overview

SOMA-1

PRELIMINARY SUMMARY OF MAP ACTIONS

Community: MIAMI COUNTY

Community No: 200220

To assist your community in maintaining the Flood Insurance Rate Map (FIRM), we have summarized below the effect of the enclosed revised FIRM panel(s) on previously issued Letter of Map Change (LOMC) actions (i.e., Letters of Map Revision (LOMRs), Letter of Map Revision based on Fill (LOMR-Fs), and Letters of Map Amendment (LOMAs)).

1. LOMCs Incorporated

The modifications effected by the LOMCs listed below have been reflected on the Preliminary copies of the revised FIRM panels. In addition, these LOMCs will remain in effect until the revised FIRM becomes effective.

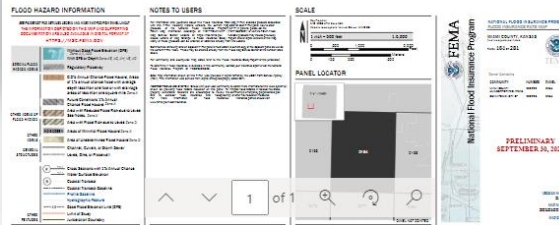
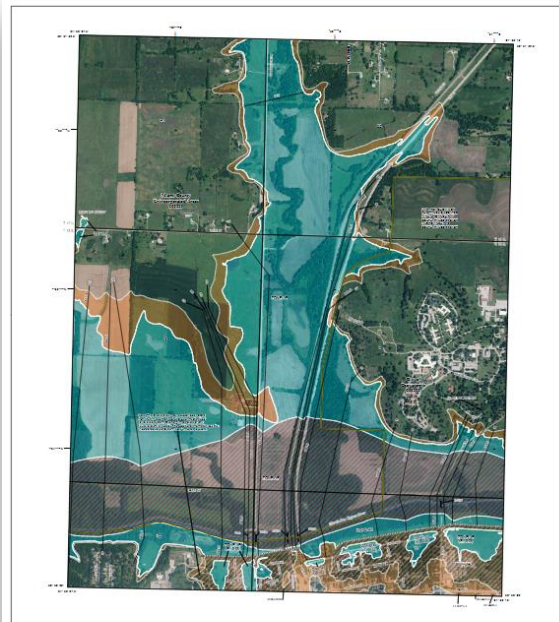
LOMC	Case No.	Date Issued	Project Identifier	Original Panel	Current Panel
			NO CASES RECORDED		

2. LOMCs Not Incorporated

The modifications effected by the LOMCs listed below are either not located on revised FIRM panels, or have not been reflected on the Preliminary copies of the revised FIRM panels because of scale limitations or because the LOMC issued had determined that the lot(s) or structure(s) involved were outside the Special Flood Hazard Area, as shown on the FIRM. These LOMCs will be revalidated free of charge 1 day after the revised FIRM becomes effective through a single revalidation letter that reaffirms the validity of the previous LOMCs.

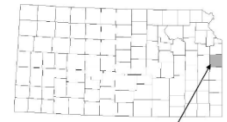
2A. LOMCs on Revised Panels

LOMC	Case No.	Date Issued	Project Identifier	Original Panel	Current Panel
LOMA	04-07-4035A	05/08/2004	33324 WEST 355TH STREET -- PORTION OF SECTION 15, T18S, R22E	200220_27A	20121C0276D
LOMA	13-07-1120A	03/19/2013	SECTION 22, T18S, R22E -- 33480 WEST 303RD STREET	20121C0276C	20121C0276C
LOMA	20-07-0844A	05/28/2020	SECTION 16, T18S, R22E -- 33510 WEST 355TH STREET	20121C0276C	20121C0276C
LOMA	21-07-0883A	06/14/2021	SECTION 16, T18S, R22E -- 32551 WEST 355TH STREET	20121C0276C, 20121C0277C	20121C0276D, 20121C0277D



MIAMI COUNTY, KANSAS AND INCORPORATED AREAS

Community Name	Community Number
FONTANA, CITY OF	200221
LOUISBURG, CITY OF	200222
MIAMI COUNTY (UNINCORPORATED AREAS)	200220
OSAWATOMIE, CITY OF	200223
PAOLA, CITY OF	200224



Miami County

PRELIMINARY
REVISED: TBD



Federal Emergency Management Agency

FLOOD INSURANCE STUDY NUMBER
20121CV000C

PRELIMINARY
SEPTEMBER 26, 2022

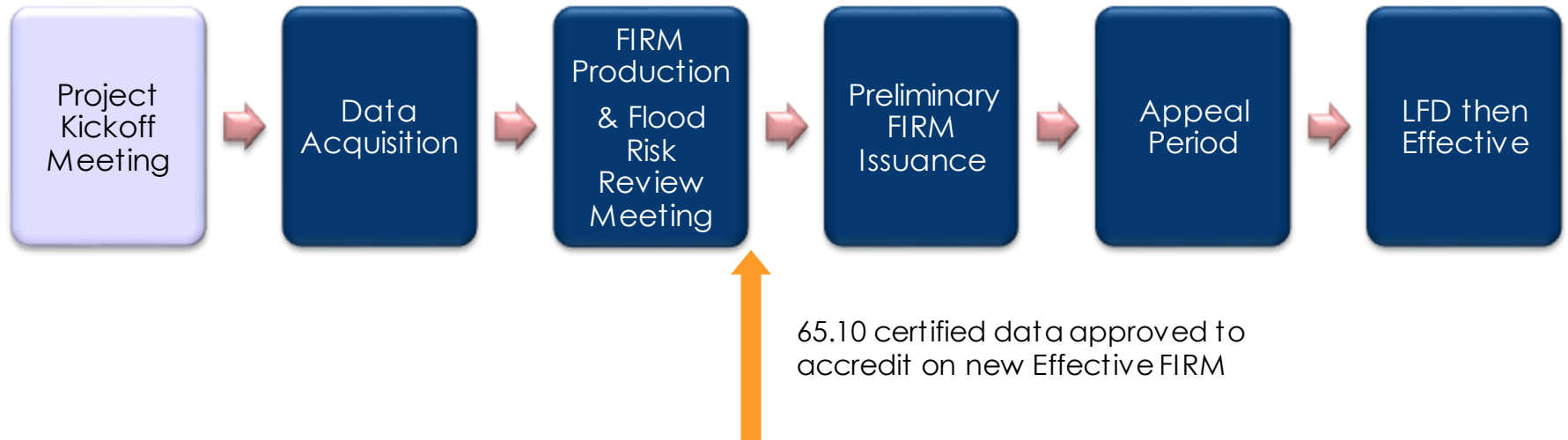
Path Forward

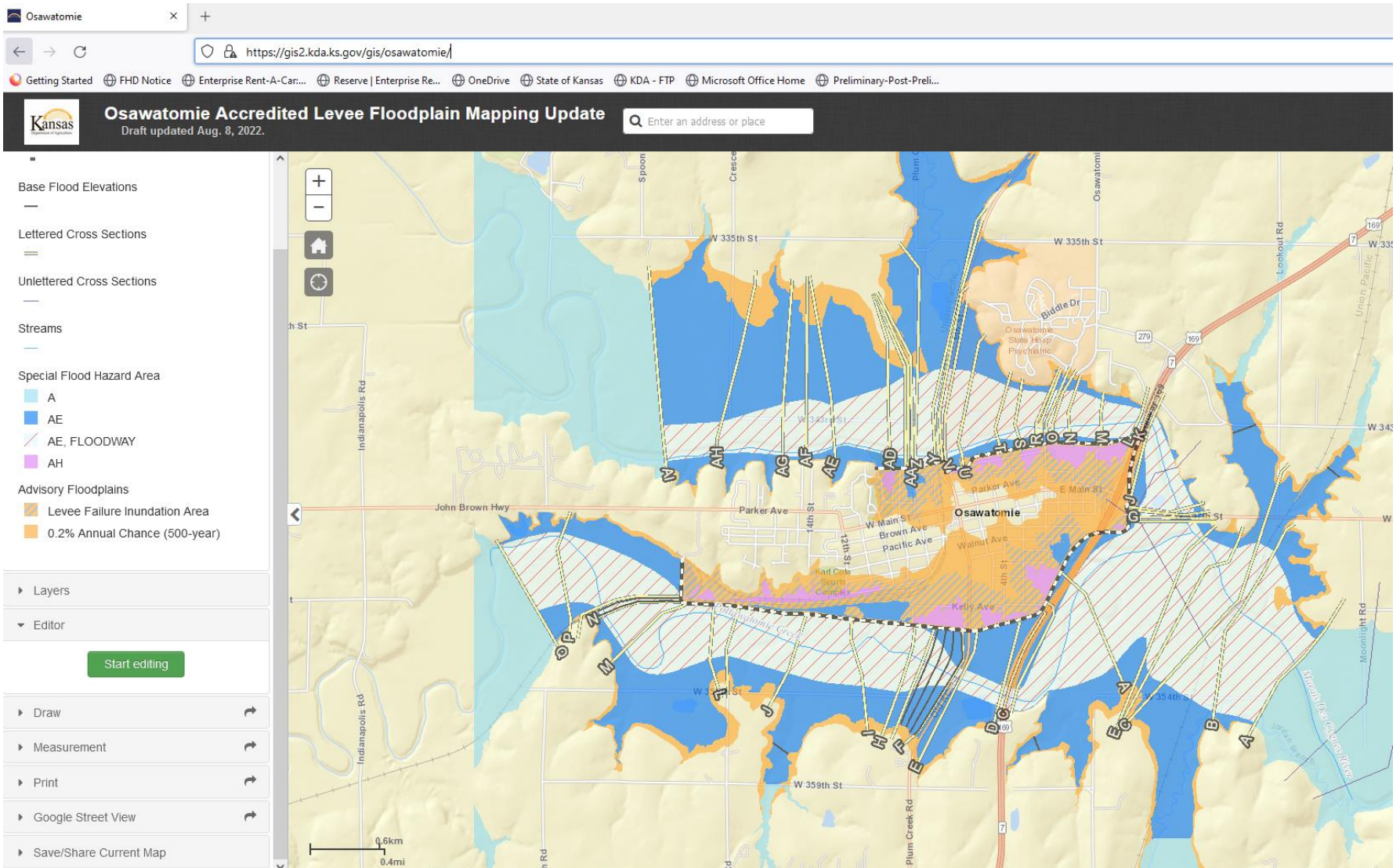
Schedule

- Today – Project Coordination Meeting
- September 8 – Provide Review Comments
- September 30 – Distribute Preliminary FIRMs
- November 2022 through February 2023 – CCO Meeting
 - Earlier the better but consider holiday season conflicts
- Spring 2023 – Appeal Period
- Winter 2023 – Letter of Final Determination (LFD)
- Summer 2024 – Effective FIRMs

Path Forward

FEMA Flood Study Project Phases





Project web map: <https://gis2.kda.ks.gov/gis/osawatomie/>

Questions?

William Zung
Project Manager
Stantec
913-202-6867
will.zung@stantec.com

Joanna Rohlf
Floodplain Mapping Coordinator
KDA – Division of Water Resources
785-296-7769
joanna.rohlf@ks.gov